

LEAD ROLL CLAMP (Patent pending)

020 8789 4717

www.solsticeenergy.co.uk

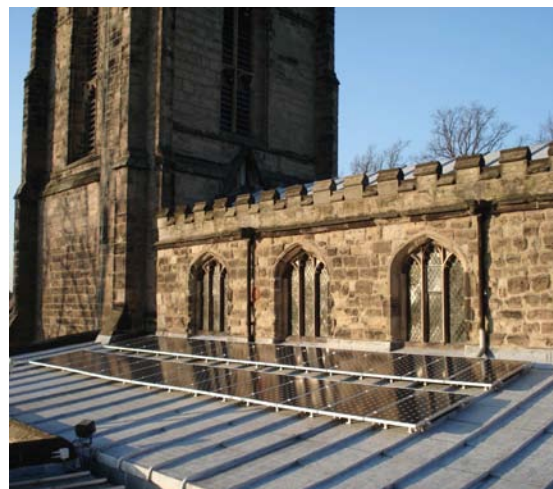


Fig 1 Clamp

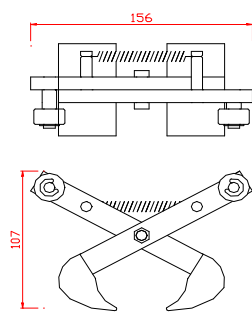
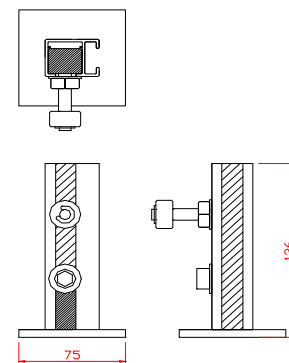


Fig 2 Prop



Designed for church buildings, the lead roll clamp offers a means of mounting on lead rolled roofs without requiring ballast, or the need to fix through, constrict, or cause damage to the lead.



- Simple engineering
- No conventional constant clamping force on the lead roll - the clamp is responsive to wind lift
- Rounded jaw tips cause minimal damage
- Allows the lead to expand and contract as it would normally
- Entirely aluminium – strong, lightweight, and no adverse reaction to the lead
- Successfully tested at the Building Research Establishment (report available on request)
- Very powerful – exceeded strength of BRE test rig and given rated wind force per clamp of 1605N
- Satisfies heritage and listing requirements not to permanently alter existing roof

Note: As with any mounting system, the lead roll clamp is only as strong as the point it is fixed to.