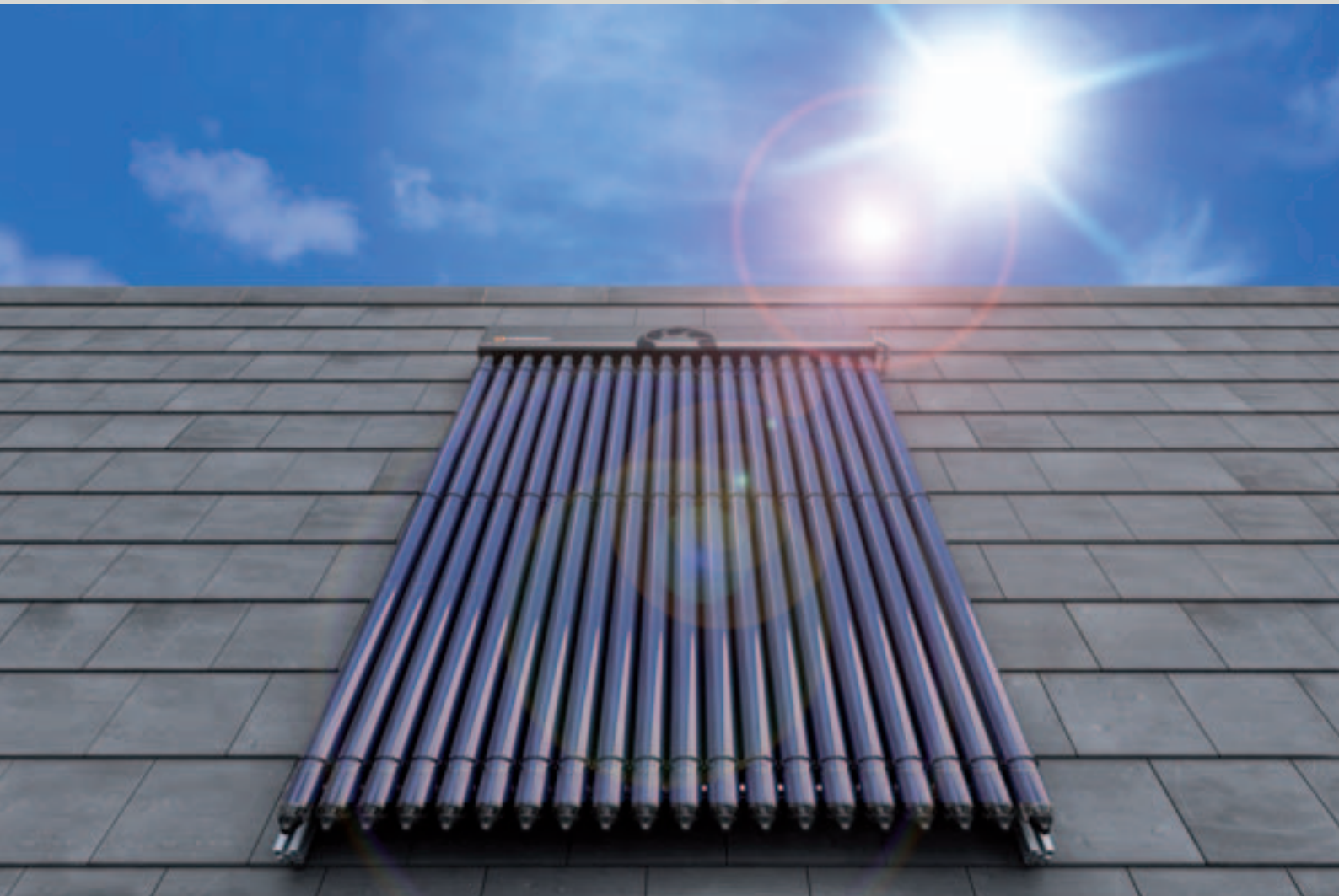


**THERMO****MAX**

Vacuum Tube Solar Systems



*Low Energy - Low Carbon Buildings*

  
**Kingspan**<sup>®</sup>

# FREE HOT WATER FROM DAWN TO DUSK AND THROUGHOUT THE YEAR WITH THERMOMAX

**Thermomax advanced vacuum tube solar systems provide hot water in all seasons.**



**Solar thermal technology transforms direct and diffuse solar radiation into useable heat using a solar collector.**

The unique design of the collectors uses vacuum technology to ensure the most effective transfer of energy into heat. This means the Thermomax solar collector has extra performance in comparison with traditional flat plate collectors, providing heat not only in warm, sunny days, but also in cooler, windy or humid conditions.



Established over 25 years ago, Thermomax is a world leader in the design and manufacture of solar thermal tube collectors. Thermomax collectors are firmly established as the premium product in the market and perform more efficiently than flat plate collectors. In particular, Thermomax systems out-perform competitors in northern Europe and other less sunny climates.

Thermomax is part of Kingspan Environmental and Renewables Ltd – a division of Kingspan Group plc.



## BEST SERVICE

- Full design and installation service from a worldwide network of Approved Installers.
- High quality, fully guaranteed products.
- Simple maintenance.
- ISO 9001 : 2000 Certified and Solar Keymark Approved.



**Free,**  
clean and safe  
energy!

## BEST FOR YOU!

- Free, clean and safe energy.
- Future proofed and environmentally friendly, reducing your Carbon footprint.
- Grants available through many Government schemes.



## PRODUCT RANGE

Each collector consists of a highly insulated water manifold and a row of tubes. The vacuum inside each tube provides perfect insulation and therefore protects the system from outside influences such as cold and windy weather or high humidity. This vacuum insulation also ensures that the energy collected from the sun is very efficiently and effectively transferred into usable heat as there is minimal heat loss.

### HP100 & HP200 Heat Pipe Solar Collectors

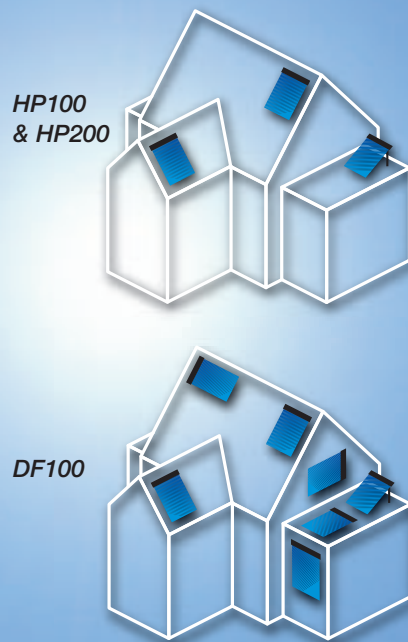
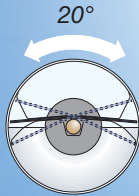
- Top of the range solar collectors.
- Highly efficient - super fast heat transfer.
- Temperature limitation safety feature.
- Ease of installation and maintenance.

The system consists of two separate circuits, one in each individual tube inside the heat pipe and one through the manifold into the hot water tank.



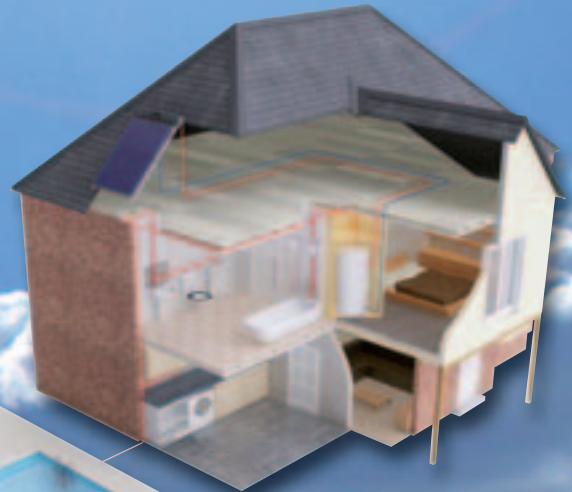
# INSTALLATION

- Unique 'plug and play' design of Thermomax solar collectors provides fast and simple installation.
- Usually installed facing south or east/west, and fixed to the roof using easy fit brackets.
- Designed for flexible building integration:
  - can be installed on sloping roofs, flat roofs or façades
  - individual tubes can be angled up to 20° to achieve best performance for building orientation
- There is no need for heavy lifting equipment as tubes can be carried onto the roof individually.



# APPLICATIONS

In addition to domestic hot water, the superior performance of a Thermomax vacuum tube collector can also provide central heating support for standard or under floor heating and more specialised industrial hot water heating for high temperature applications and solar cooling.



## DF100 Direct Flow Solar Collector

- Standard solar collector.
- Cost effective choice.
- Highly variable installation methods.
- Flexible building integration.

Heat transfer fluid is circulated in a coaxial manner through the manifold and tubes.

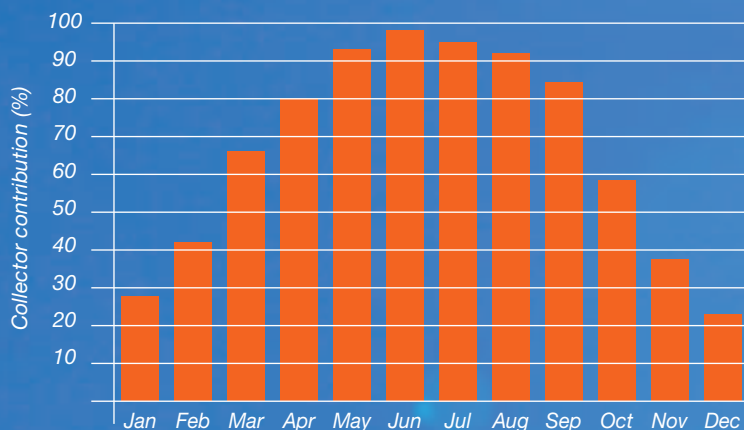


# BEST PERFORMANCE

- Supplies up to 70% of your annual hot water needs.
- Works from dawn until dusk throughout the year.
- Provides heat even in cold, windy or humid conditions.
- Less reliance on your boiler for hot water and/or heating.

Up to **70%**  
of your annual  
hot water  
**free**

The graph below indicates the typical annual solar energy contribution for London.



# BEST EFFICIENCY

- Faster payback.
- Rapid conductivity and transfer of energy into heat  
- 30% more effective than conventional flat plate panels  
(Source: SPF Test).
- Designed and manufactured specifically for northern European climates.
- User friendly with long service life.

Up to **30%**  
more effective  
than flat plate  
panels



HP100 & HP200

DF100



011-7S060 R 011-7S125 R



This brochure is printed on paper made from  
80% post-consumer waste and 20% virgin pulp  
that is Forest Stewardship Council (FSC) certified.



## Kingspan Renewables Limited

Balloo Crescent, Bangor BT19 7UP  
Tel.: +44 (0) 28 9127 0411 Fax: +44 (0) 28 9127 0572  
E-mail: [info@kingspan-renewables.com](mailto:info@kingspan-renewables.com)  
[www.kingspan-renewables.com](http://www.kingspan-renewables.com)